

CLI Instructions

Guide to a Headless Linux Install

Create a new VM Machine (Look at the instructions for the GUI if you forgot how)

- `_Name`: yourname-CLI
- `_RAM`: 1024
- `_CPU`: 1
- `_HD`: 16G
- `_VLAN`: assigned to you

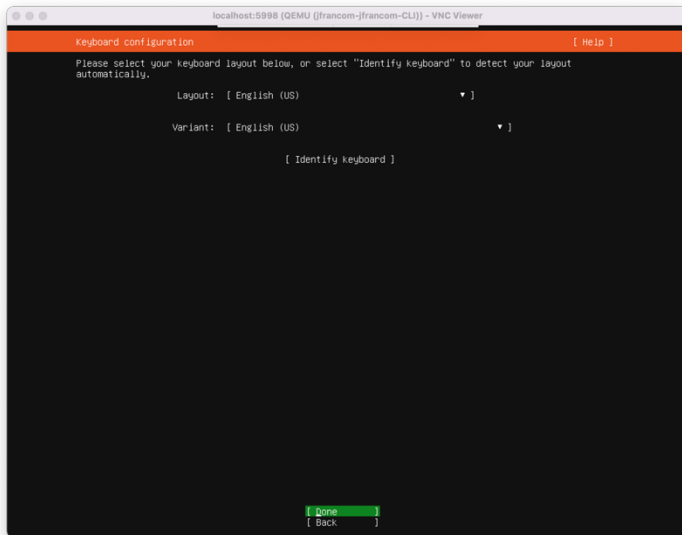
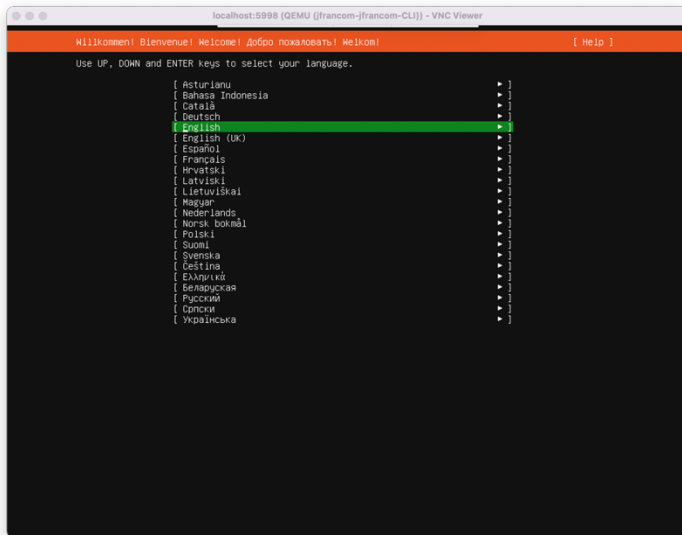
Booting your machine

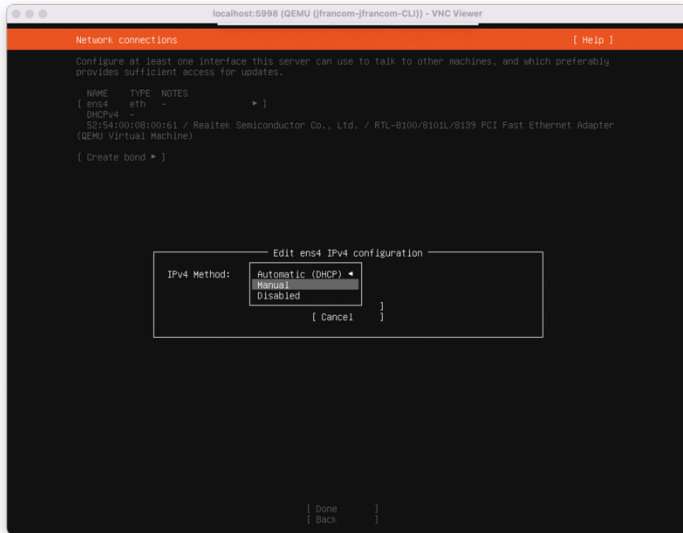
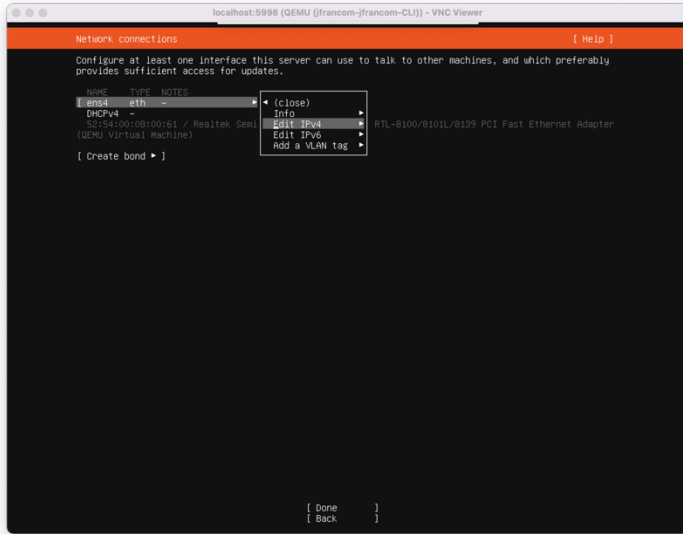
- `_Boot`: D Drive
- `_Image`: bionic_server

Note the VNC:Port of your new machine and have your VM Worksheet with the IP nums available.

Remember that this is keyboard based – your mouse will not work.

Use tab and/or arrow keys to navigate and ENTER to select.





IP's:

144.38.218.8 – 144.38.218.15

VLAN:

3066

Gateway: (Starting IP + 1)

144.38.218.9

Subnet: (256 – 8 (IP's) = 248)

255.255.255.248

Broadcast: (Last IP in range)

144.38.218.15

Usable IP's: (First = Starting IP + 2)

1. 144.38.218.10

2. 144.38.218.11 (bionic desktop)

3. 144.38.218.12

4. 144.38.218.13

5. 144.38.218.14

DNS Servers

144.38.192.2, 144.38.192.3

Search domains:

it1100.cs.dixie.edu

You must enter the information manually. The subnet is different than on the GUI install. It is in CIDR notation. That means that it will take your first IP address and then add /29 to the end.

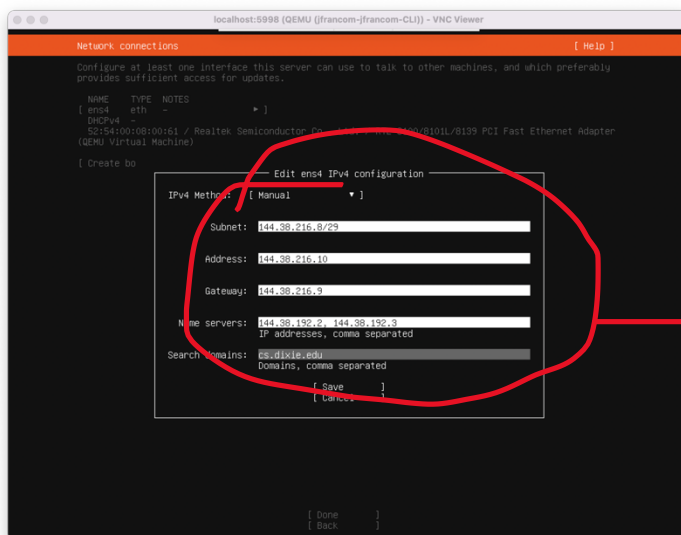
Subnet: 144.38.218.8/29

Address: 144.38.218.10

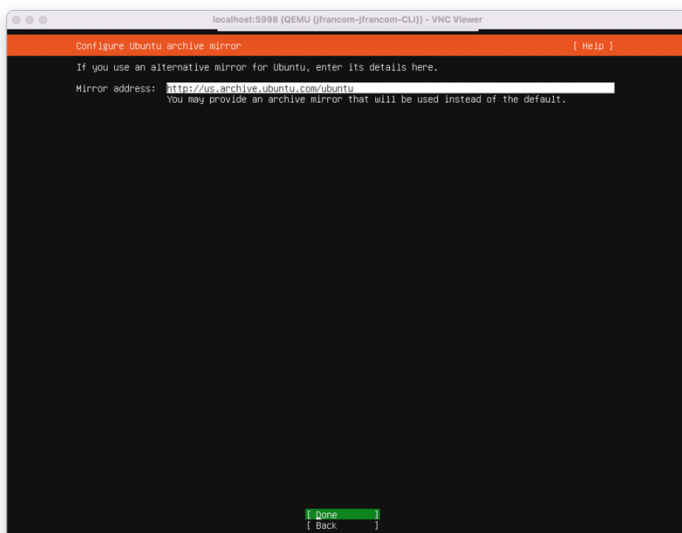
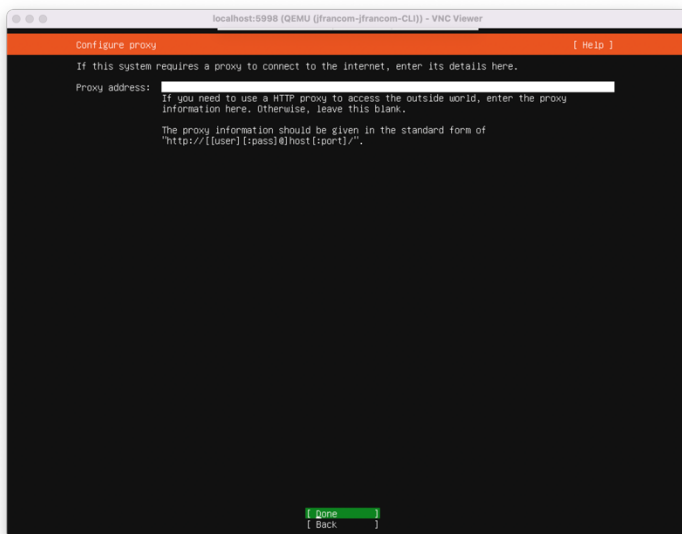
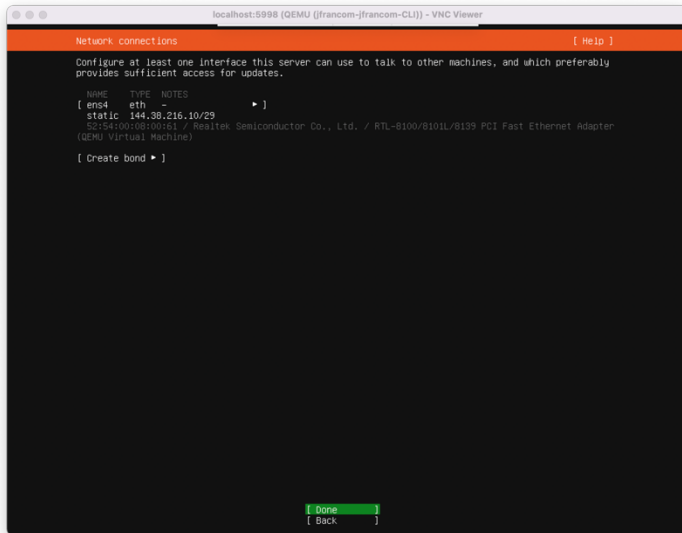
(One of your 5 usable addresses)

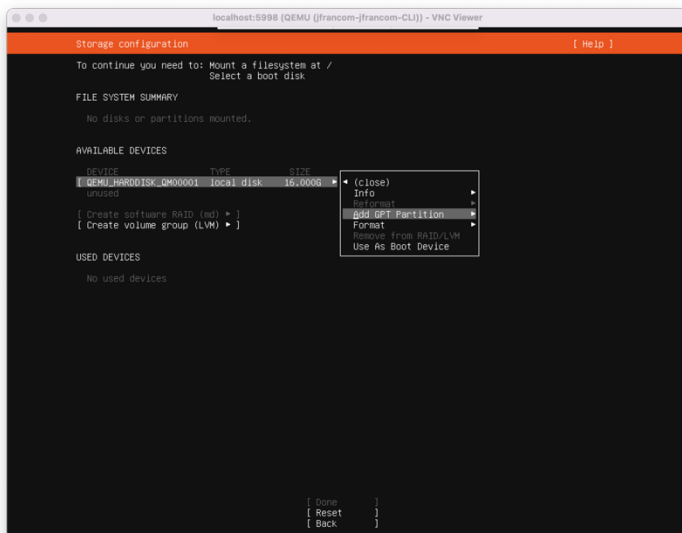
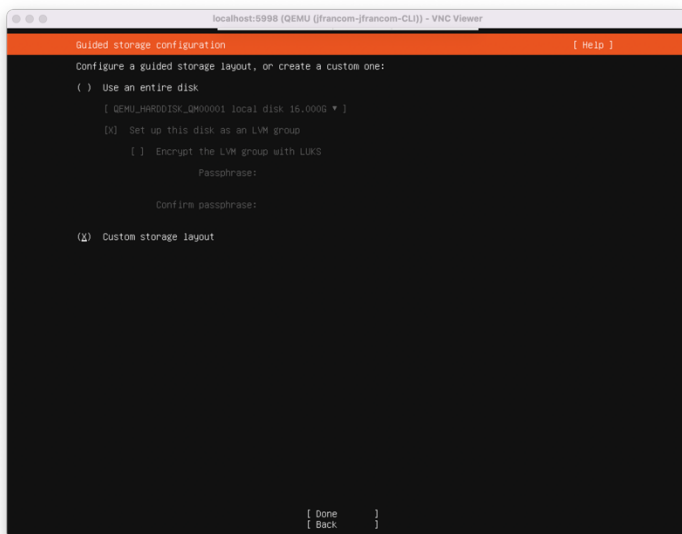
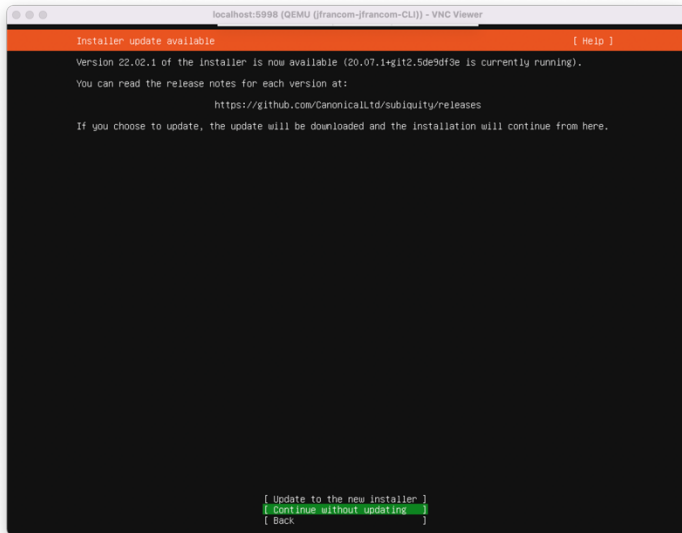
Name servers: 144.38.192.2,
144.38.192.3

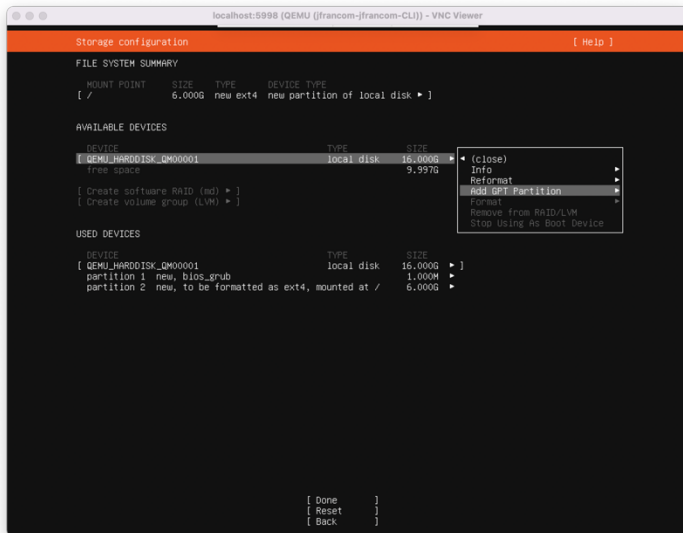
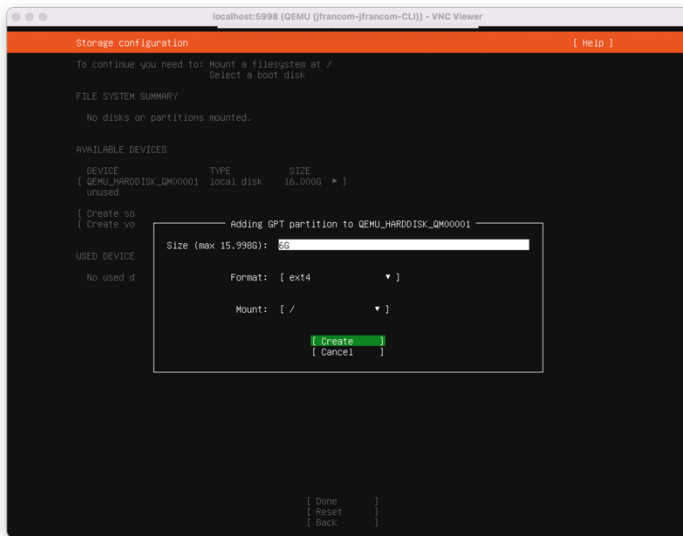
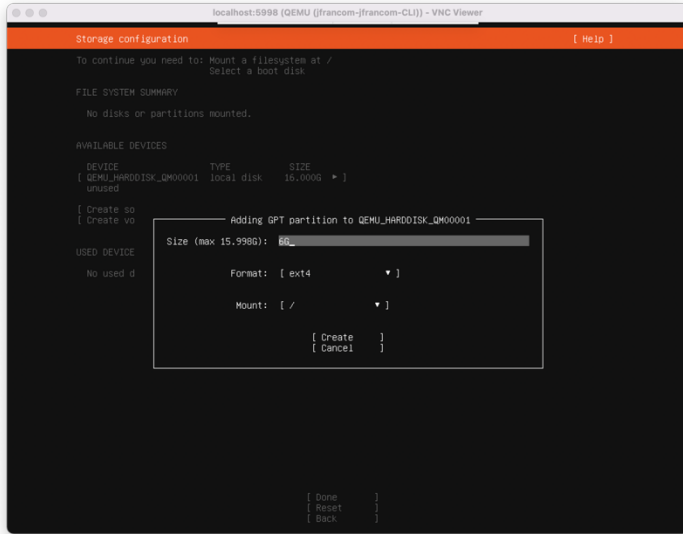
Search domains: it1100.cs.dixie.edu

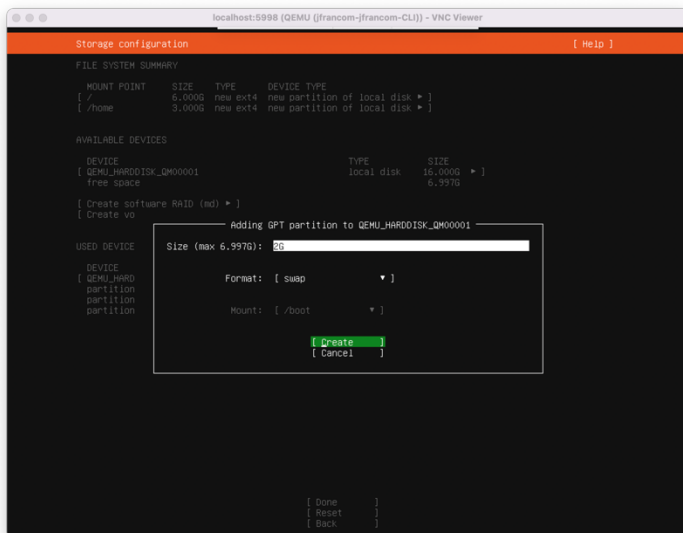
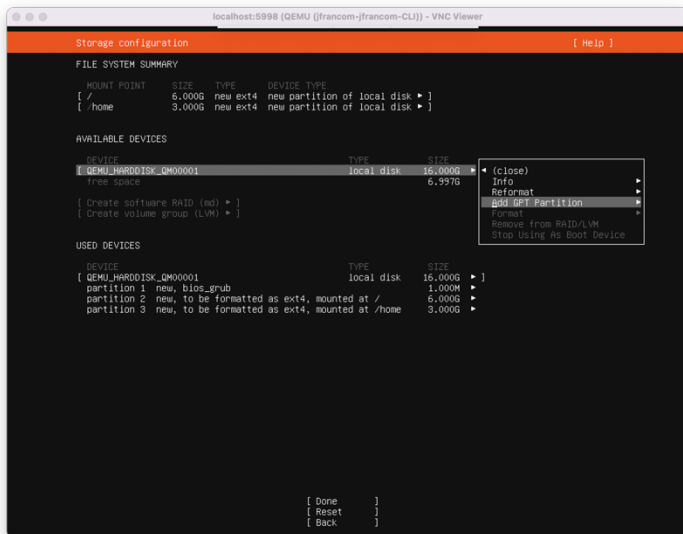
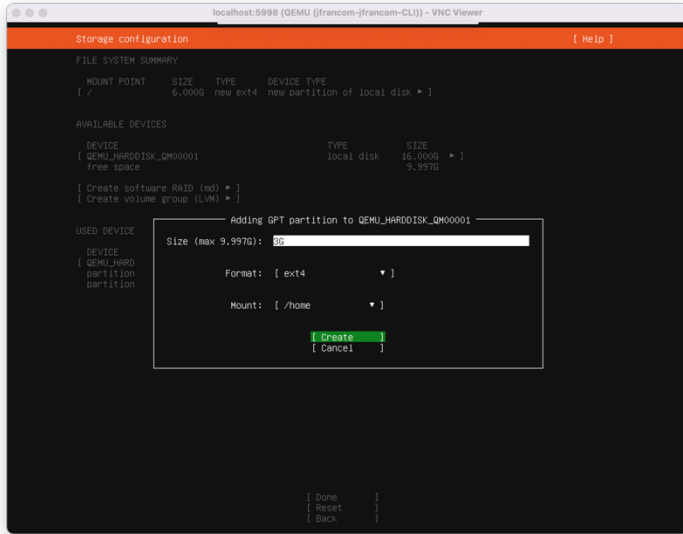


Don't use my numbers, see above or See the GUI install if you don't remember










```

Storage configuration [ Help ]

FILE SYSTEM SUMMARY
MOUNT POINT  SIZE  TYPE  DEVICE TYPE
[ /           6,000G new ext4 new partition of local disk ▶ ]
[ /home      3,000G new ext4 new partition of local disk ▶ ]
[ /swap      2,000G new swap new partition of local disk ▶ ]

AVAILABLE DEVICES
DEVICE              TYPE  SIZE
[ QEMU_HARDDISK_QM00001  local disk  16,000G ▶ ]
Free space          4,997G

[ Create software RAID (md) ▶ ]
[ Create volume group (LVM) ▶ ]

USED DEVICES
DEVICE              TYPE  SIZE
[ QEMU_HARDDISK_QM00001  local disk  16,000G ▶ ]
partition 1 new, bios_grub          1,000M ▶
partition 2 new, to be formatted as ext4, mounted at / 6,000G ▶
partition 3 new, to be formatted as ext4, mounted at /home 3,000G ▶
partition 4 new, to be formatted as swap          2,000G ▶

[ Done ]
[ Reset ]
[ Back ]

```

```

Storage configuration [ Help ]

FILE SYSTEM SUMMARY
MOUNT POINT  SIZE  TYPE  DEVICE TYPE
[ /           6,000G new ext4 new partition of local disk ▶ ]
[ /home      3,000G new ext4 new partition of local disk ▶ ]
[ /swap      2,000G new swap new partition of local disk ▶ ]

AVAILABLE DEVICES
DEVICE              TYPE  SIZE
[ QEMU_HARDDISK_QM00001  local disk  16,000G ▶ ]
Free space          4,997G

[ Create software RAID (md) ▶ ]
[ Create volume group (LVM) ▶ ]

USED DEVICES
DEVICE              TYPE  SIZE
[ QEMU_HARDDISK_QM00001  local disk  16,000G ▶ ]
partition 1 new, bios_grub          1,000M ▶
partition 2 new, to be formatted as ext4, mounted at / 6,000G ▶
partition 3 new, to be formatted as ext4, mounted at /home 3,000G ▶
partition 4 new, to be formatted as swap          2,000G ▶

[ Done ]
[ Reset ]
[ Back ]

```

```

Storage configuration [ Help ]

FILE SYSTEM SUMMARY
MOUNT POINT  SIZE  TYPE  DEVICE TYPE
[ /           6,000G new ext4 new partition of local disk ▶ ]
[ /home      3,000G new ext4 new partition of local disk ▶ ]
[ /swap      2,000G new swap new partition of local disk ▶ ]

AVAILABLE DEVICES
DEVICE              TYPE  SIZE
[ QEMU_HARDDISK_QM00001  local disk  16,000G ▶ ]
Free space          4,997G

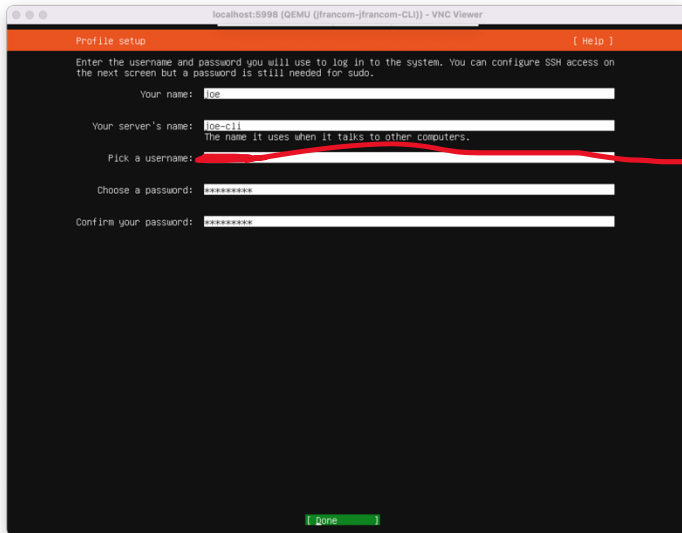
[ Create so
[ Create vo

USED DEVICE
DEVICE
[ QEMU_HARDDISK_QM00001  local disk  16,000G ▶ ]
partition
partition
partition
partition

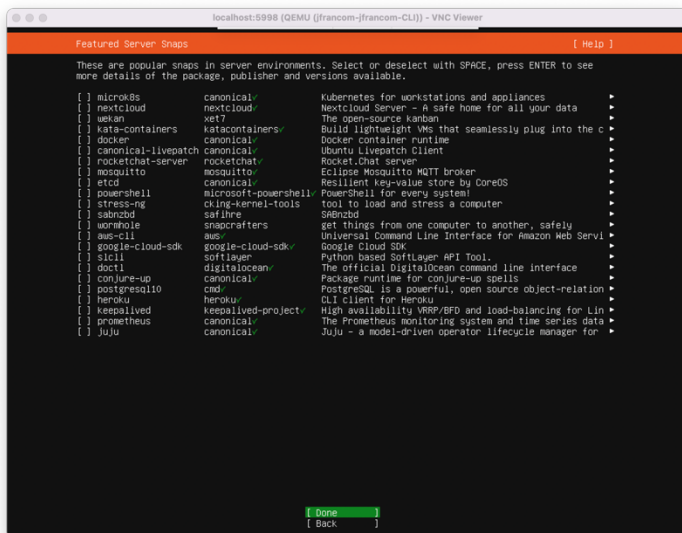
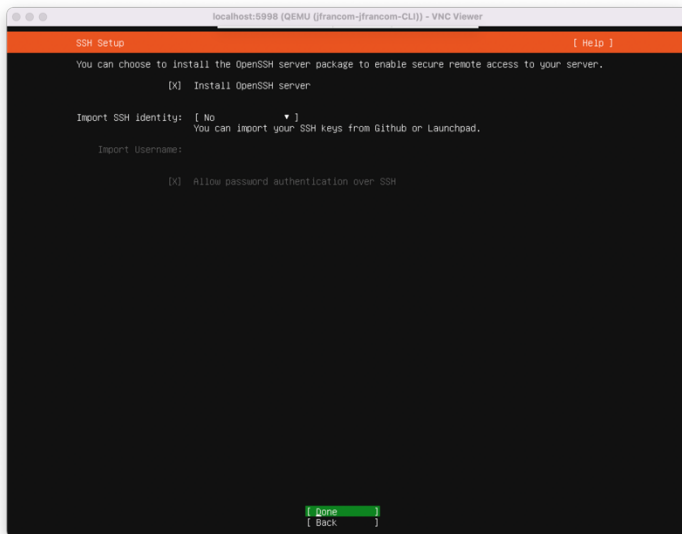
Confirm destructive action
Selecting Continue below will begin the installation process and
result in the loss of data on the disks selected to be formatted.
You will not be able to return to this or a previous screen once the
installation has started.
Are you sure you want to continue?
[ No ]
[ Continue ]

[ Done ]
[ Reset ]
[ Back ]

```



Make this your CIT username



Wait for it to finish installing.

You must turn your machine off manually and then turn it back on booting off the c drive.

Check your machine:port so that you can get back in.

This completes part I of assignment 7. There is much more you need to do. Please refer to the instructions for assignment 7 here: <http://cit.dixie.edu/it/1100/projects.examples/lab7.php>