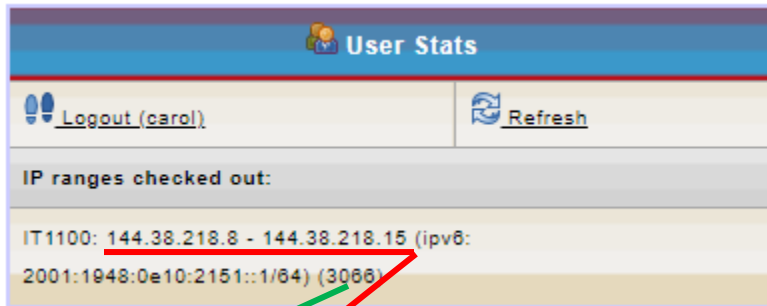


VM-Gui install notes

Part 1

- 1) Go to vm.cs.dixie.edu
- 2) Fill out VM Worksheet (Match VLAN to correct class if more than one)



VM Worksheet (keep this the entire semester)

VLAN #: 3066

IP's: 144.38.218.8 – 144.38.218.15

Gateway: (Starting IP + 1): 144.38.218.9

GUI Subnet: (256 – 8 (IP's) = 248): 255 . 255 . 255 . 248

CLI Subnet: (CIDR Notation - Starting IP/29): 144.38.218.8/29

Broadcast: (Last IP in range): 144.38.218.15

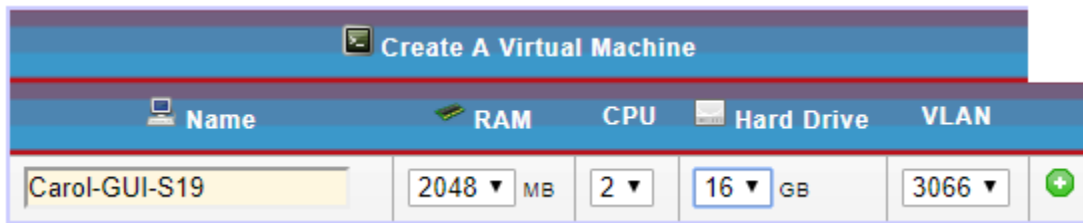
Usable IP's:

1. (starting IP+2): **144.38.218.10** for **GUI Install**
2. (starting IP+3): **144.38.218.11** for _____
3. (starting IP+4): **144.38.218.12** for _____
4. (starting IP+5): **144.38.218.13** for _____
5. (starting IP+6): **144.38.218.14** for _____

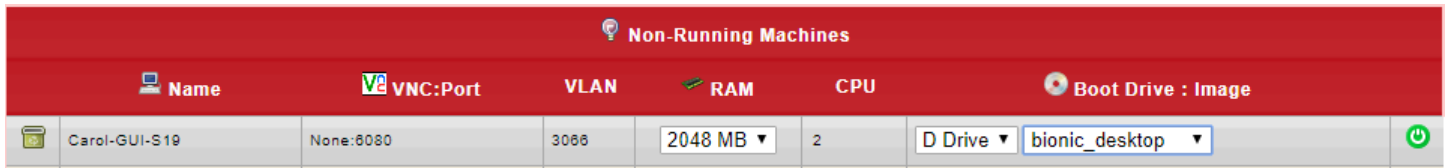
DNS Servers: 144.38.192.2, 144.38.192.3

Search domains: it1100.cs.dixie.edu

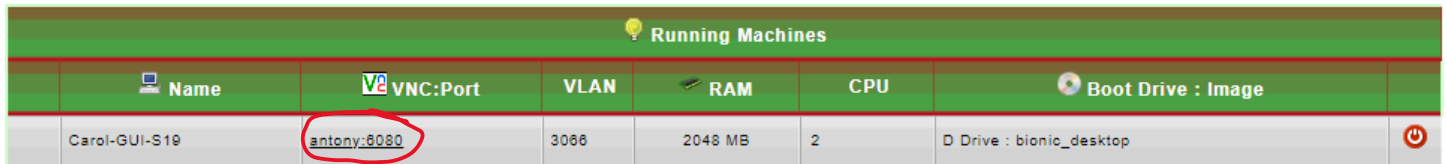
3) Put in the following info: Linux-GUI, RAM 2048, CPU 2, Hard Drive 16



4) Click the green button to create machine. (1 min)



5) Make sure you choose D-Drive and bionic_desktop. Then click Green Button. (2 min)



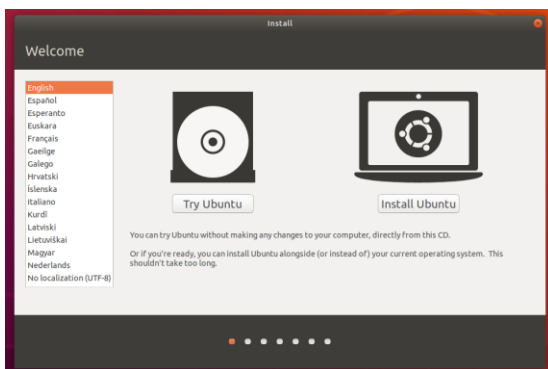
6) You may need to refresh the screen to see your running machine. Write down the VNC:Port.

-----END Part 1-----

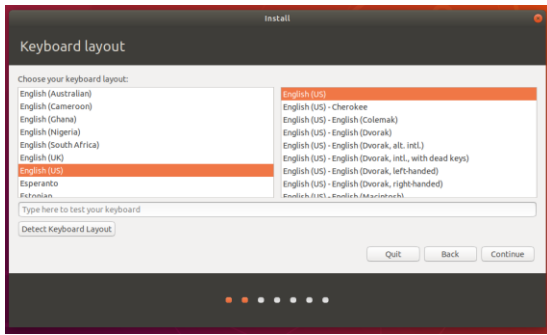
For part II you will need to use a VNC viewer. This is a non-secure connection to your computer. Your computer is currently trying to install the software that is on the D drive. To see the instillation, you need a monitor to the computer. You get this with a VNC viewer. If you are off the CIT network, you will have to create a tunnel (using ssh which is secure) first and then you can use the viewer. Notes on how to do this are in canvas under study guides.

-----Part 2-----

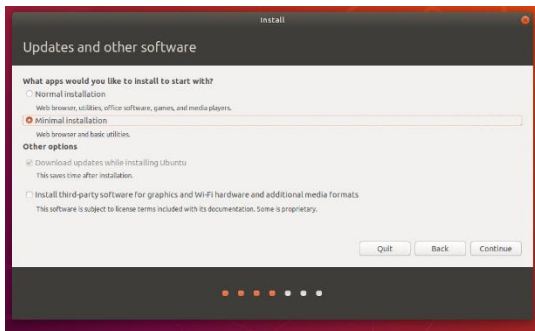
1) Use a VNC viewer (Linux: Remmina, Windows: TightVNC, MAC: Chicken of the VNC)



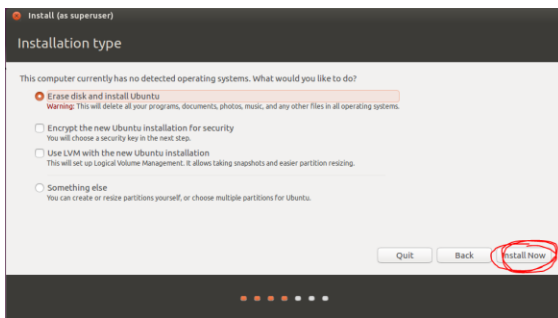
2) Click "Install Ubuntu"



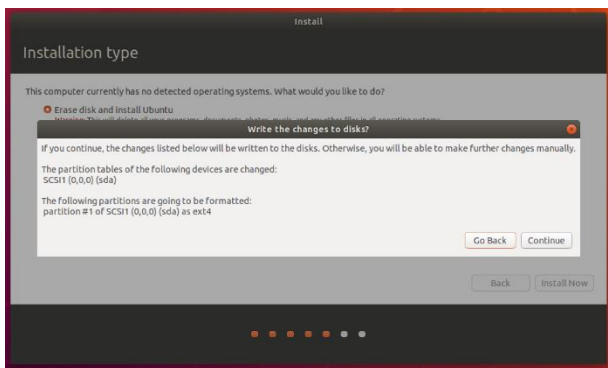
3) Click "Continue"



4) Choose "Minimal installation" Then click "Continue"



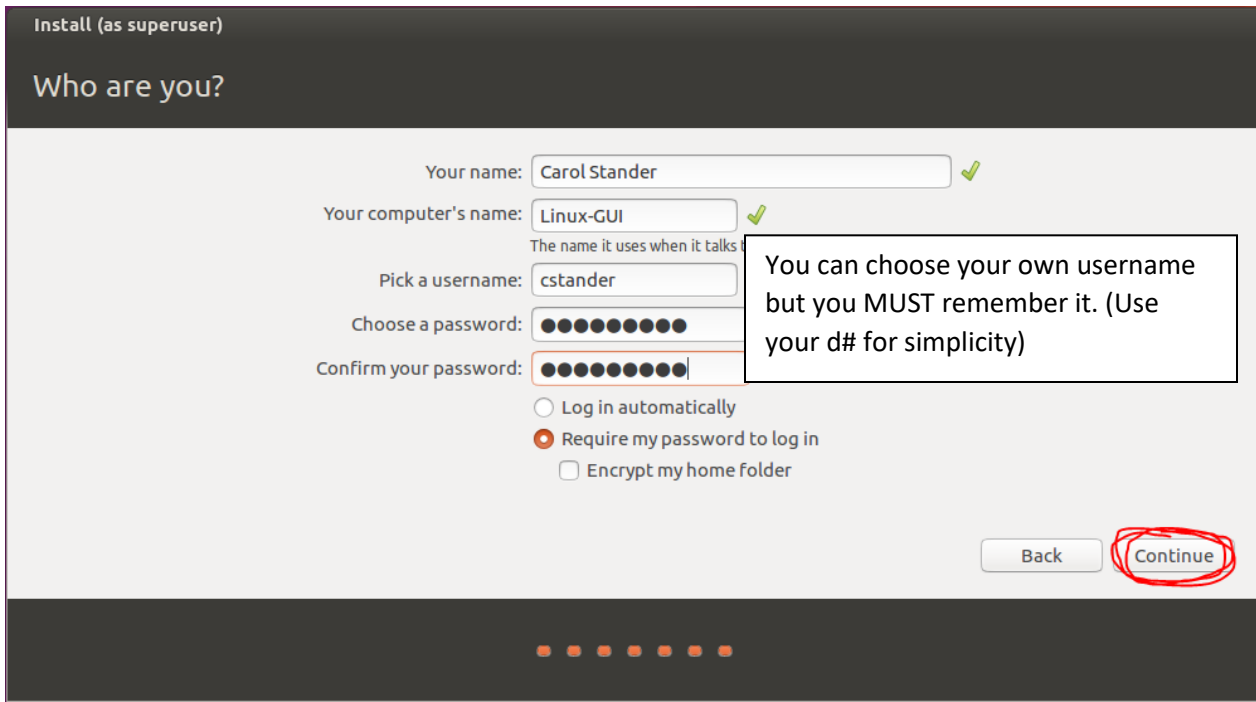
5) Keep first option selected to erase disk and then click "Install Now"



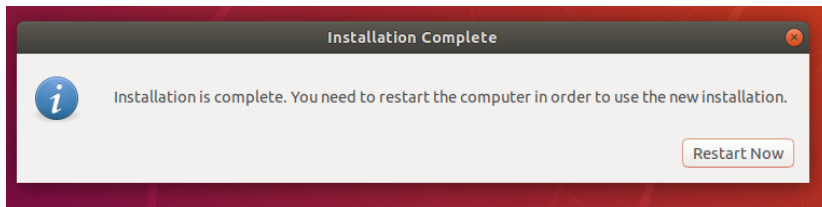
6) Click Continue



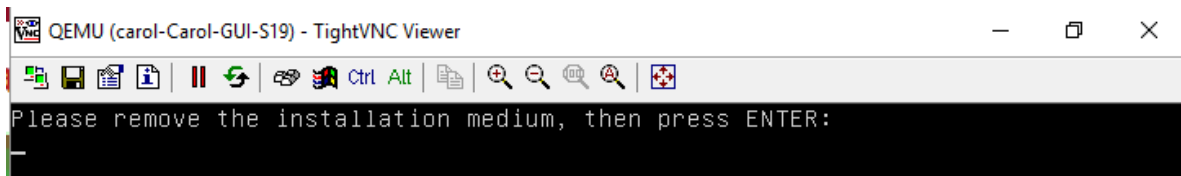
7) Select Mountain Time Zone by clicking near Denver and then click continue



7 Enter your information and then click "Continue" (Takes a while – at least 6 minutes)



8 Click Restart Now



9 Close VNC Viewer

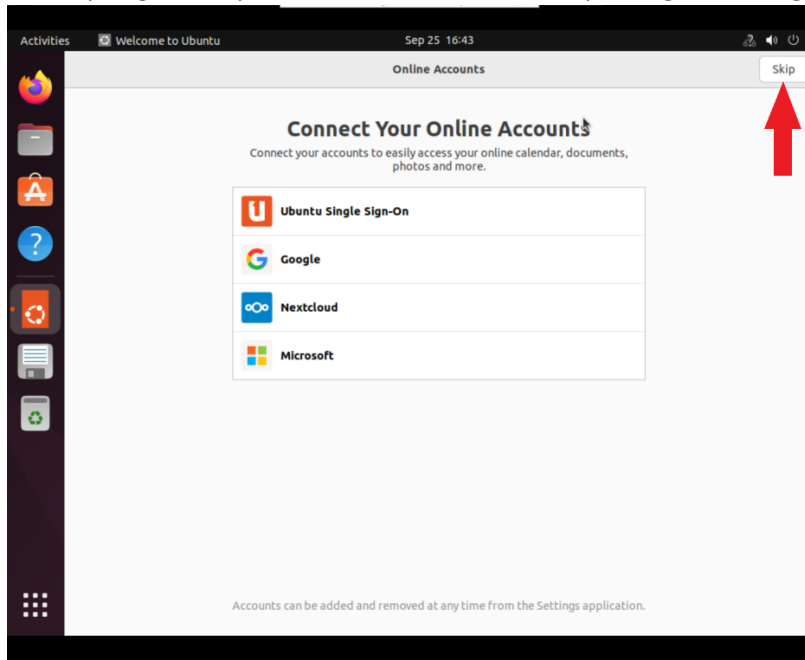
Running Machines						
Name	VNC:Port	VLAN	RAM	CPU	Boot Drive : Image	
Carol-GUI-S19	antony:8080	3066	2048 MB	2	D Drive : bionic_desktop	⏻

10 Refresh vm.cs.dixie.edu and then click the red button.

Non-Running Machines						
Name	VNC:Port	VLAN	RAM	CPU	Boot Drive : Image	
Carol-GUI-S19	None:8080	3066	2048 MB	2	C Drive	⏻

11 Make sure it is on the C Drive! Refresh and then Click the green button

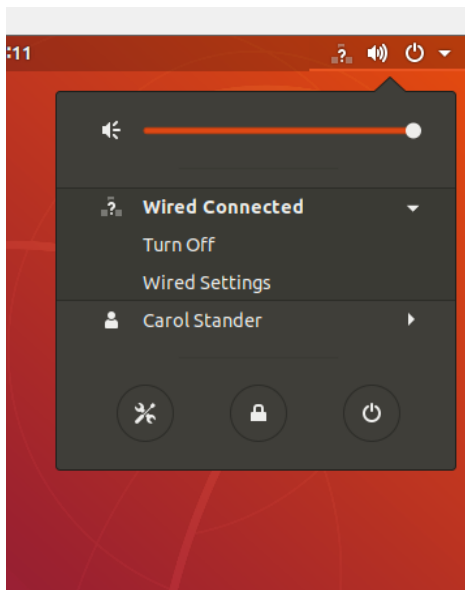
- 12 Check your VNC:Port and use the current one to continue.
- 13 Open your VNC viewer and wait (takes 1-2 min)
- 14 Enter your password when the account comes up and wait
- 15 When you get into your account click Next or Skip as it goes through the advertisements. (DO NOT upgrade).



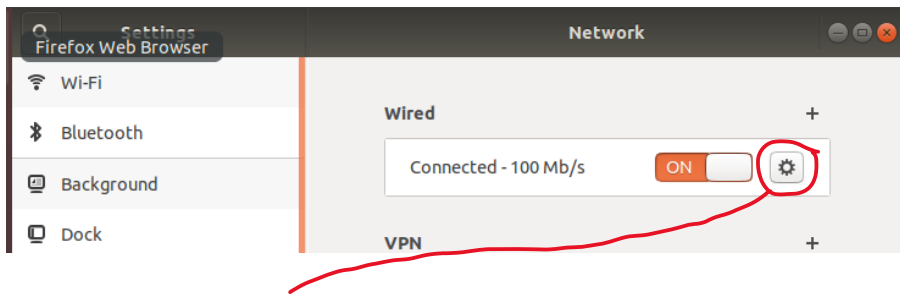
----- Enter Network Information -----

You now need to set up your computer to get to the internet. The computer is connected to a router via a wired connection. We will use the worksheet created earlier to enter the information.

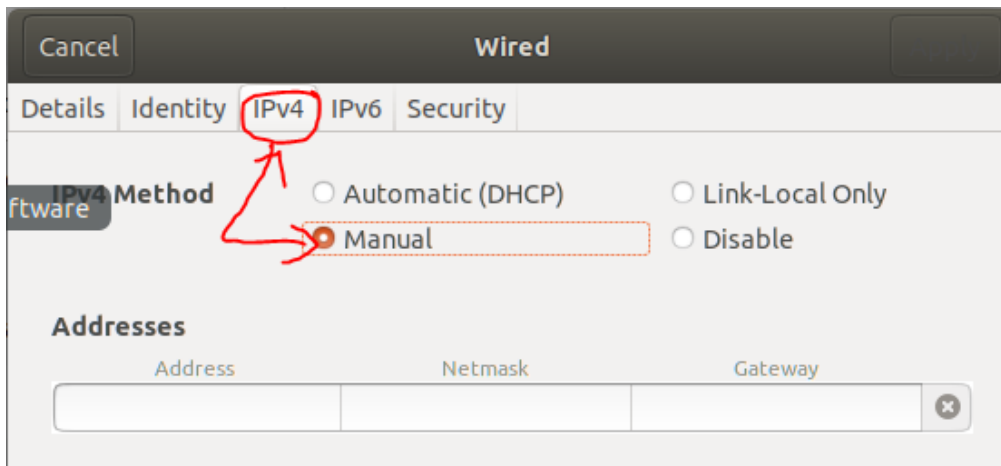
- 1) Click on this icon in the top right of your machine.



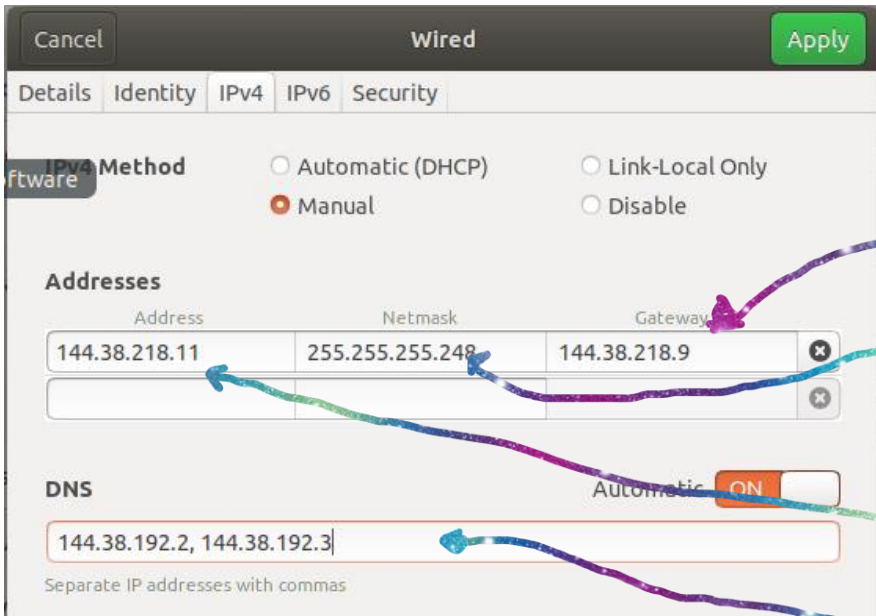
2) Choose Wired Connected and then Wired Settings.



3) Click on the settings wheel.



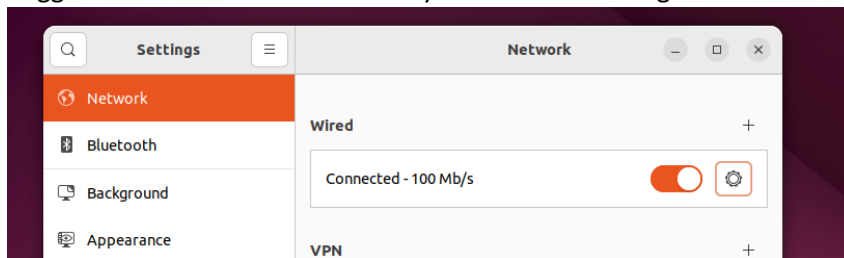
4) Click on IPv4 and Manual to get to this screen.



Worksheet #1
CIT VM INFO:
IP's:
144.38.218.8 – 144.38.218.15
VLAN:
3066
Gateway: (Starting IP + 1)
144.38.218.9
Subnet: (256 - 8 (IP's) = 248)
255.255.255.248
Broadcast: (Last IP in range)
144.38.218.15
Usable IP's: (First - Starting IP + 2)
 1. **144.38.218.10**
 2. **144.38.218.11 (bionic desktop)**
 3. **144.38.218.12**
 4. **144.38.218.13**
 5. **144.38.218.14**
DNS Servers
 144.38.192.2, 144.38.192.3
Search domains:
 it1100.cs.dixie.edu

5) Enter information from Worksheet. Then click "Apply" in the top right corner.

16 Toggle the on-off switch to enable your network settings.



17 The network button should be showing the network without the ?.



18 To test your network connections launch firefox.

----- Part 3 Install ssh -----

Installing SSH

- 1) open terminal by clicking on the dots in the bottom left corner and then typing "terminal" in the search bar.
- 2) sudo apt update
- 3) sudo apt install openssh-server

----- Part 4 Change your theme -----

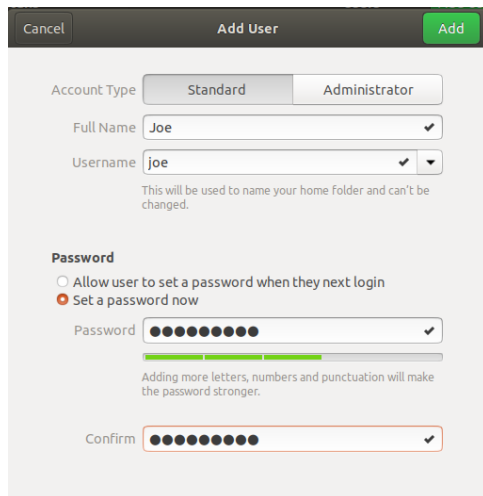
- 1) Click on the dots in the bottom left corner and you should see the settings wheel. Click on the settings wheel.
- 2) Choose Background
 - a. HINT (If you click and hold on the top of the task bar it will detach from full screen mode. This will allow you to see more of the window which will then enable you to change the settings on the Lock Screen.

----- Part 5 Install GVIM -----

- 1) `sudo apt install vim-gtk3`

----- Part 6 Add user Joe -----

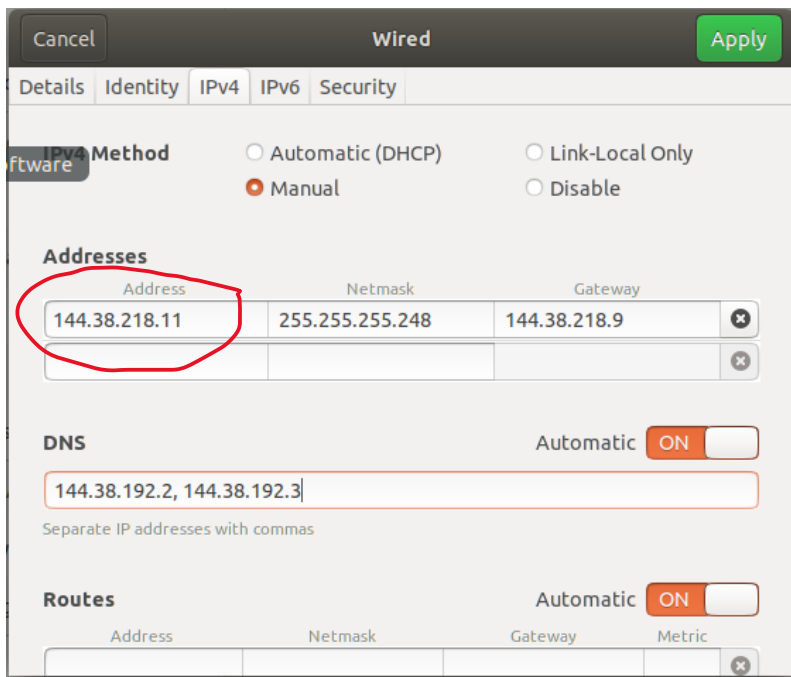
- 1) Click on the dots in the bottom left corner and you should see the settings wheel. Click on the settings wheel.
- 2) In settings you need to scroll down to the bottom of the left menu and choose "Details"
- 3) In the "Details" menu choose "Users"
- 4) In the top right there is an unlock button, click it. (You will be asked for your password)
- 5) The unlock button changes to a green "Add User" button. Click it.



6. You will need to log out. (Not shutdown, just logout)

----- Part 7 ssh into Joe and list directory -----

- 1) Log in to your VM as Joe. This is important or the next step won't work.
- 2) Open a terminal on your local machine. (NOT in the new Linux VM)
- 3) Get into scratch.
- 4) ssh into your new Linux VM. You will use the ip address you gave your VM.



Example: `carol@scratch:~$ ssh joe@144.38.218.11`

Run the command `ls -al`